

Fall Covers for Spring Savings

A COVER CROP PREMIUM DISCOUNT PROGRAM FOR CROP INSURANCE







Kris Reynolds, Midwest Regional Director
CCA, 4R NMS Certified, SSP

Fall Covers for Spring Savings

- How we developed program in Illinois
- Outcomes from the FY 2020 program
- What's next?




We should do this in Illinois!

The Gazette     New Iowa crop insurance discount for cover...

New Iowa crop insurance discount for cover crops

\$5-per-acre premium break expected to be part of three-year demonstration project



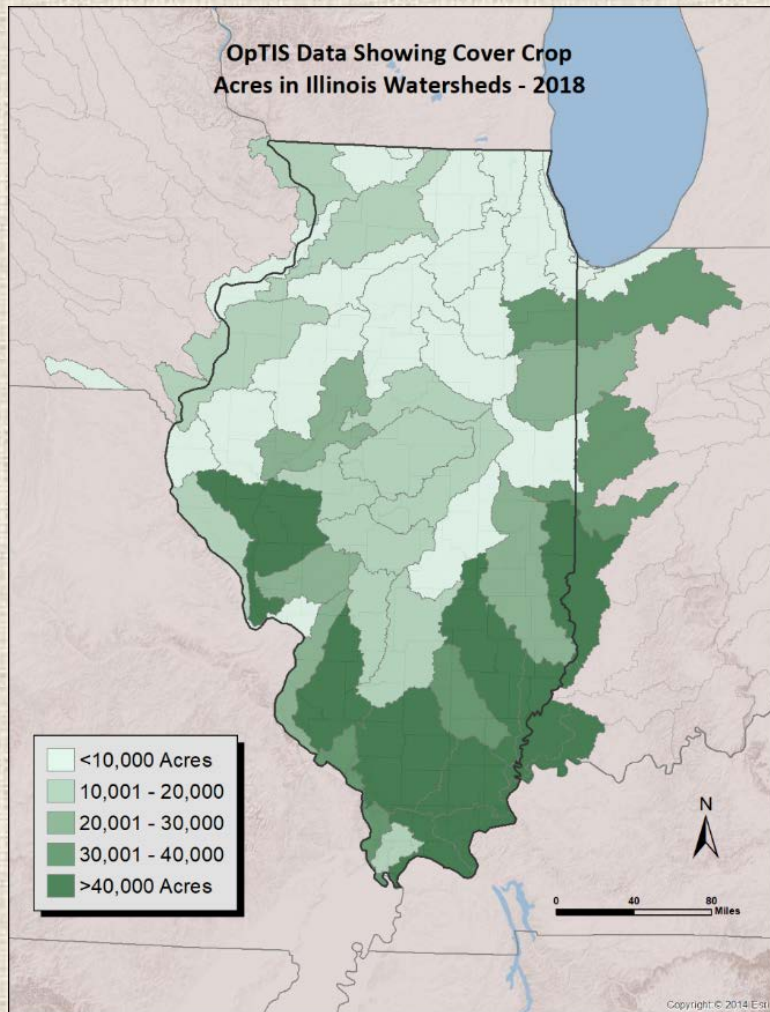
Jack Boyer of Reinbeck drives his tractor and disperses cover crop seed over a field near Reinbeck on Nov. 10, 2017. A retiree of John Deere, he researched and experimented with different crops on his own land and found that cover crops were beneficial

Cedar Rapids Gazette, November 20, 2017

Supporting Partners

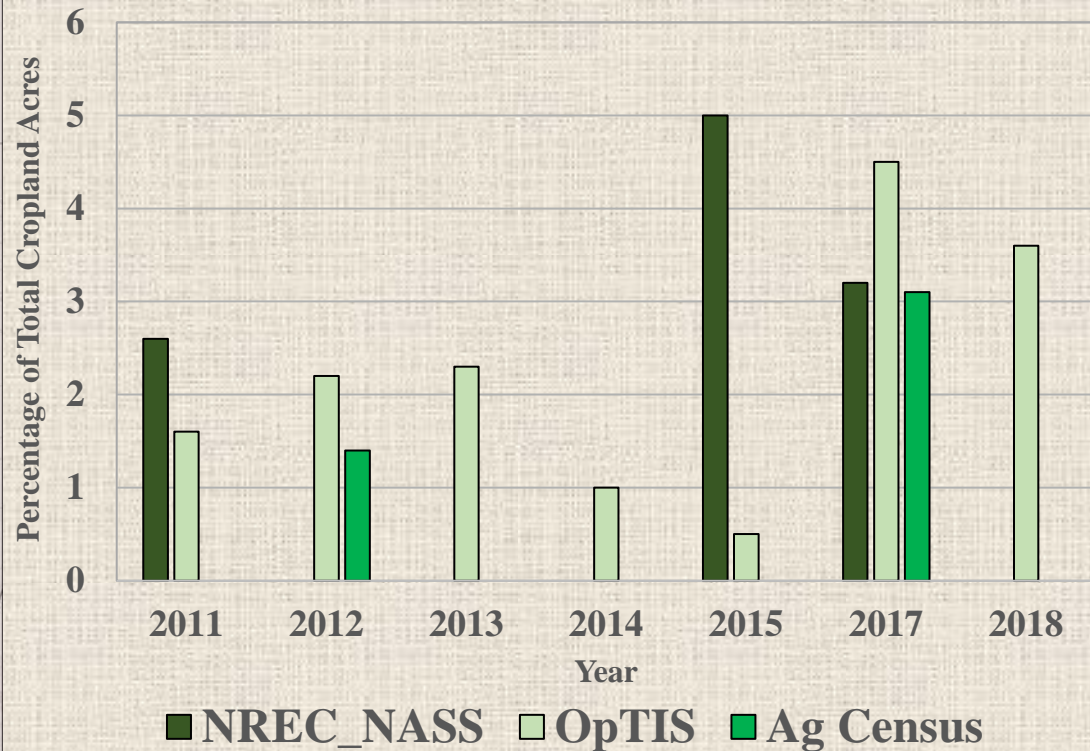


Background



Map courtesy of The Nature Conservancy

Cover Crop Adoption in IL



A crop insurance premium discount program for cover crops?

The program:

- \$5/ac – shows up on farmers bill as “cover crop discount”
- Fund held by IL Dept of Ag (MOU with USDA-Risk Management Agency)
- Coupling of conservation and risk management programs



Program Goals and Benefits

- More cover crops in IL - 200,000 by 2022!
- Discount listed on every crop insurance bill - Cover crops as a risk reduction tool
- Improve water quality and meet NLRs goals
- Reduced GHG emissions
- Lower cost than current cost share programs
- Improved soil health and resiliency
- Pilot program for next Farm Bill

Application process

Step 1. Farmers certify cover crop acres with FSA office after planting; Farmer receives FSA 578 form along with maps and uses these to apply for program.

Step 2. Farmers apply for crop insurance premium discount program by January 15 to IDOA. They submit maps, 578 and a 1-page application form.

Step 3. IDOA/SWCDs verify eligibility and that they are not enrolled in other programs; notify successful applicants; report acreage to RMA.

Step 4. SWCDs do spot checks for verification in February.

Step 5. RMA works with Approved Insurance Providers (AIPs) to apply discounts to crop insurance invoices.

Proposed project budget

	2020		2021		2022	
	units	total cost	units	total cost	units	total cost
Cover crop discount (\$5/ac)	50,000 ac	250,000	100,000 ac	500,000	200,000 ac	1,000,000
SWCD compensation (\$100/contract)*	500 contracts	50,000	1,000 contracts	100,000	2,000 contracts	200,000
TOTAL		\$300,000		\$600,000		\$1,200,000
TOTAL COST, 3 YEAR PILOT=	\$2,100,000					
*Assumes farmers enroll an average of 100 acres/farmer (contract)						

FY 2020 Program Overview

- **Eligibility**
 - Acres planted to cover crops in fall of 2019 and to be planted to an insurable crop in 2020
 - ***IF** planted outside of other state and federal incentive programs (no double-dipping)*
 - No acreage caps per applicant, applications processed on a first come, first served basis
 - Enrollment open from December 4th 2019 – Jan 15th 2020

FY 2020 Program Overview

- **On-line Application Requirements***
 - Applicant contact info
 - Acres of cover crops seeded
 - Farm, Tract, and Common Land Unit/Field #s
 - Legal Description of fields/acres seeded to covers in fall
 - Survey questions to determine if acres were new

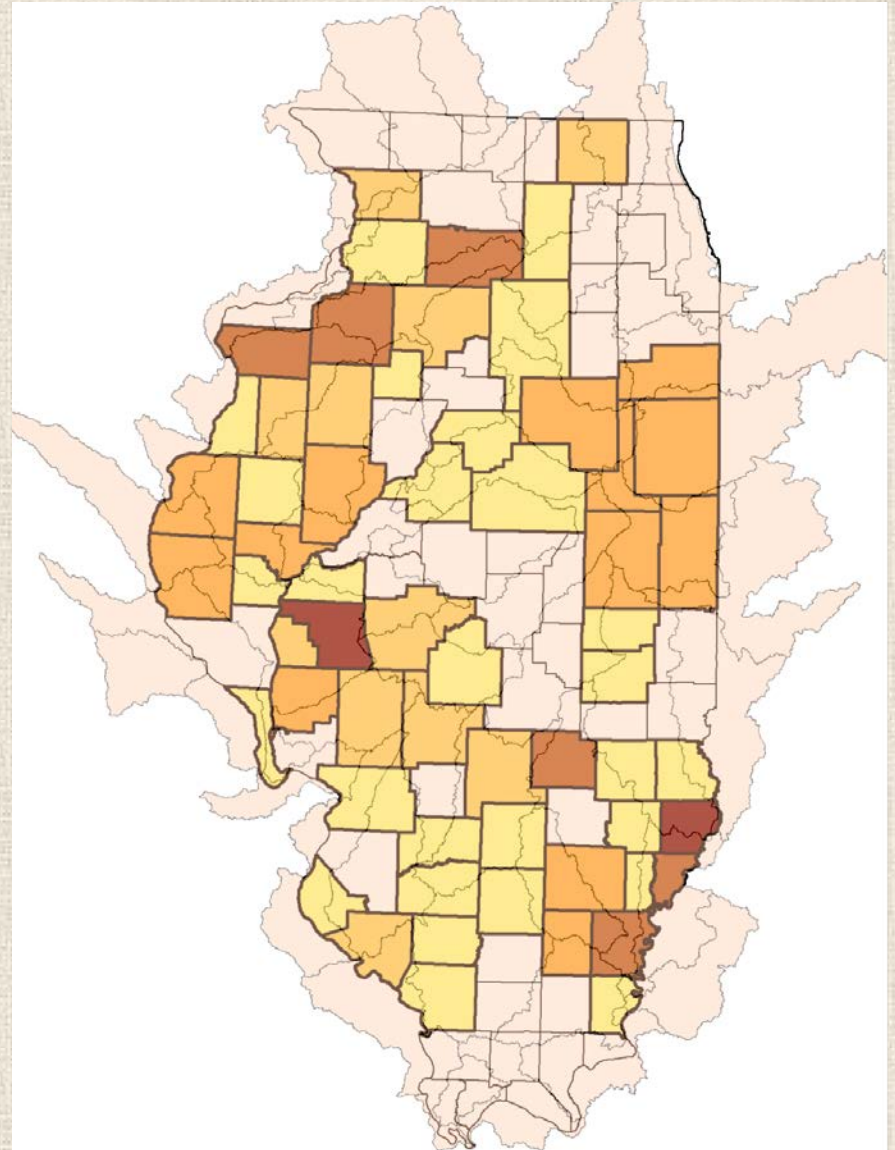
*Required info and field designations much match info reported via an individual's Federal "Report of Commodities" Form (FSA – 578).

FY 2020 Program Stats

- 306 applications from 212 operators on 50k acres were submitted by December 17th, 2020
- **Total acres applied for = 113,000**
- **Total applications received = 700 +**
- **70% of approved acres were new**

FY 2020 Outcomes

Non-point source (NPS) nutrient, greenhouse gas (GHG) and sediment load reductions from acres enrolled in the Fall Covers for Spring Savings Program (FCSS) were estimated on a per county basis



FY 2020 Outcomes Data Sources

- Acres enrolled in the FCSS Program per County in IL – IDOA
- GHG reductions in Carbon Dioxide Equivalents (CO₂e) from implementation of non-legume cover crop - USDA and Colorado State University's COMET-Planner Tool
- HUC 8 NPS Nutrient Loading - IL NLRs 2019 Science Assessment Update
- HUC 8 and Illinois County Boundaries – Geospatial Data Gateway
- Non-irrigated cropland acres per county (calculated as total cropland acres remaining after subtracting irrigated cropland acres reported per county) - 2017 Census of Agriculture
- Average annual sediment load per county - 2018 IL Department of Agriculture Tillage Transect


FY 2020 Outcomes


IDOA Fall Covers Program

FY 2020 Enrollment


50,000 Acres

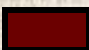
Acres Enrolled Per County

 **< 500 (28)**

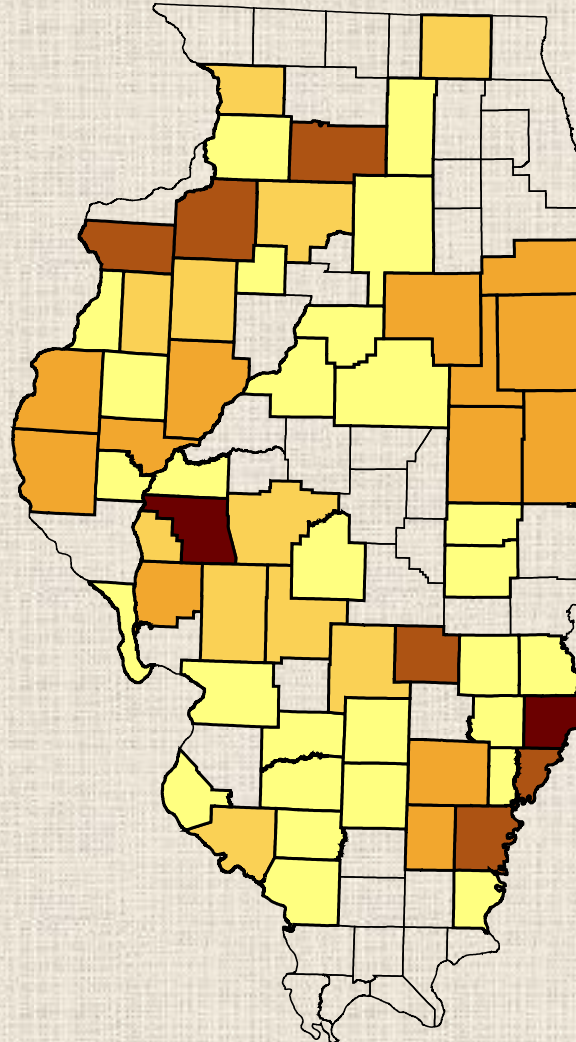
 **500 – 1,000 (11)**

 **1,000 – 2,000 (13)**

 **2,000 – 3,000 (6)**

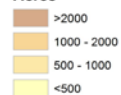
 **> 3,000 (2)**

60 Counties Total

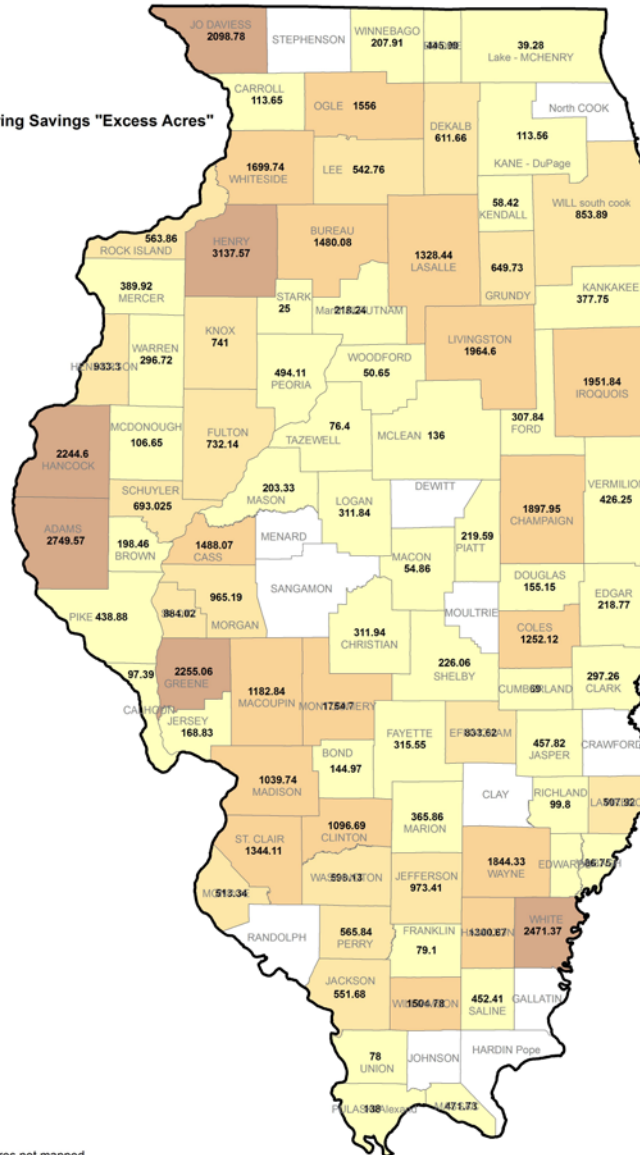


Fall Cover for Spring Savings "Excess Acres"

Acres



Note: 235 additional acres not mapped

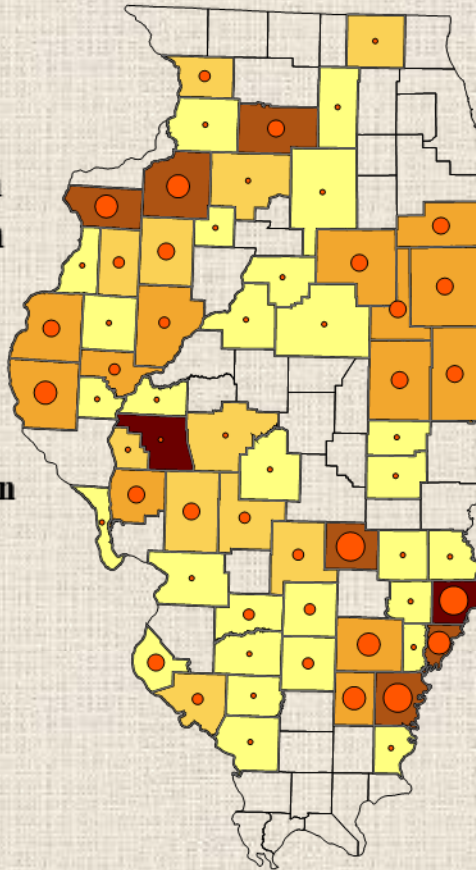


FY 2020 Outcomes

**Statewide
Annual Phosphorus
Load Reduction from
Fall Covers Program
13,758 Pounds**

**Annual P Load Reduction
Per County (Lbs)**

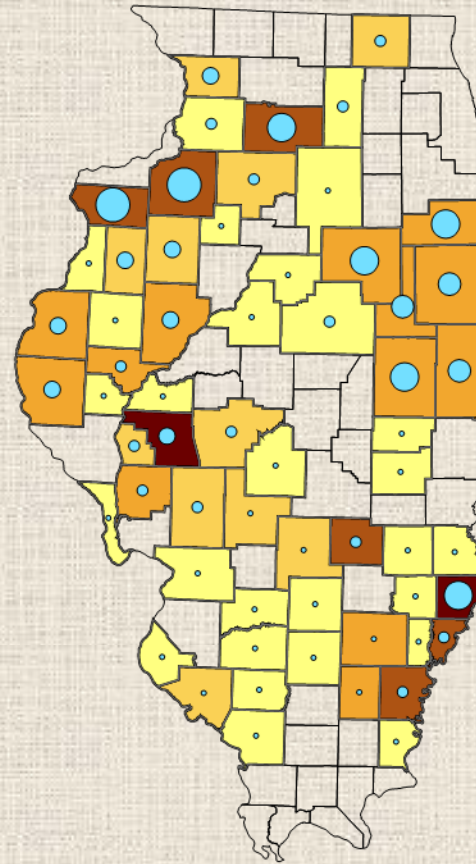
- < 100
- 100 - 250
- 250 - 500
- 500 - 750
- > 750



**Statewide
Annual Nitrate-N
Load Reduction from
Fall Covers Program
145,523 Pounds**

**Annual Nitrate-N Load
Reduction Per County (Lbs)**

- < 1,000
- 1,000 - 2,500
- 2,500 - 5,000
- 5,000 - 7,500
- 7,500 - 10,000
- > 10,000

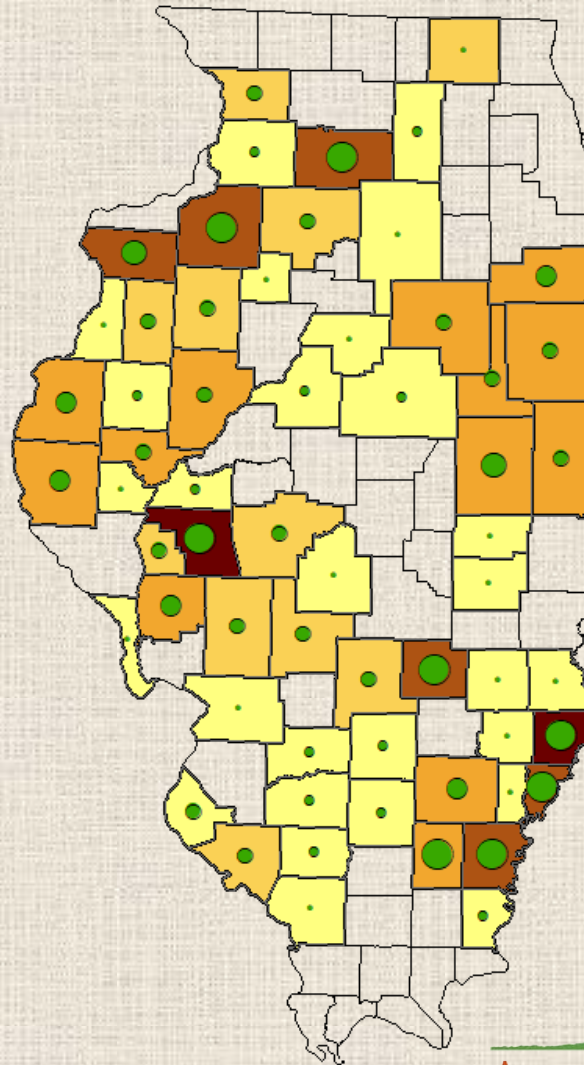


FY 2020 Outcomes

**Statewide
Annual GHG Emission
Reduction from
Fall Covers Program
24,318 Tonnes CO₂e**

**Annual GHG Emission
Reduction Per County
(Tonnes CO₂e)**

- < 100
- 100 - 250
- 250 - 500
- 500 - 750
- 750 - 1000
- > 1000



FY 2020 Outcomes

NUTRIENT, SEDIMENT AND GHG REDUCTIONS FROM THE FCSS PROGRAM

3,898

truckloads

of sediment
kept out of
waterways

Over
145,000 lbs

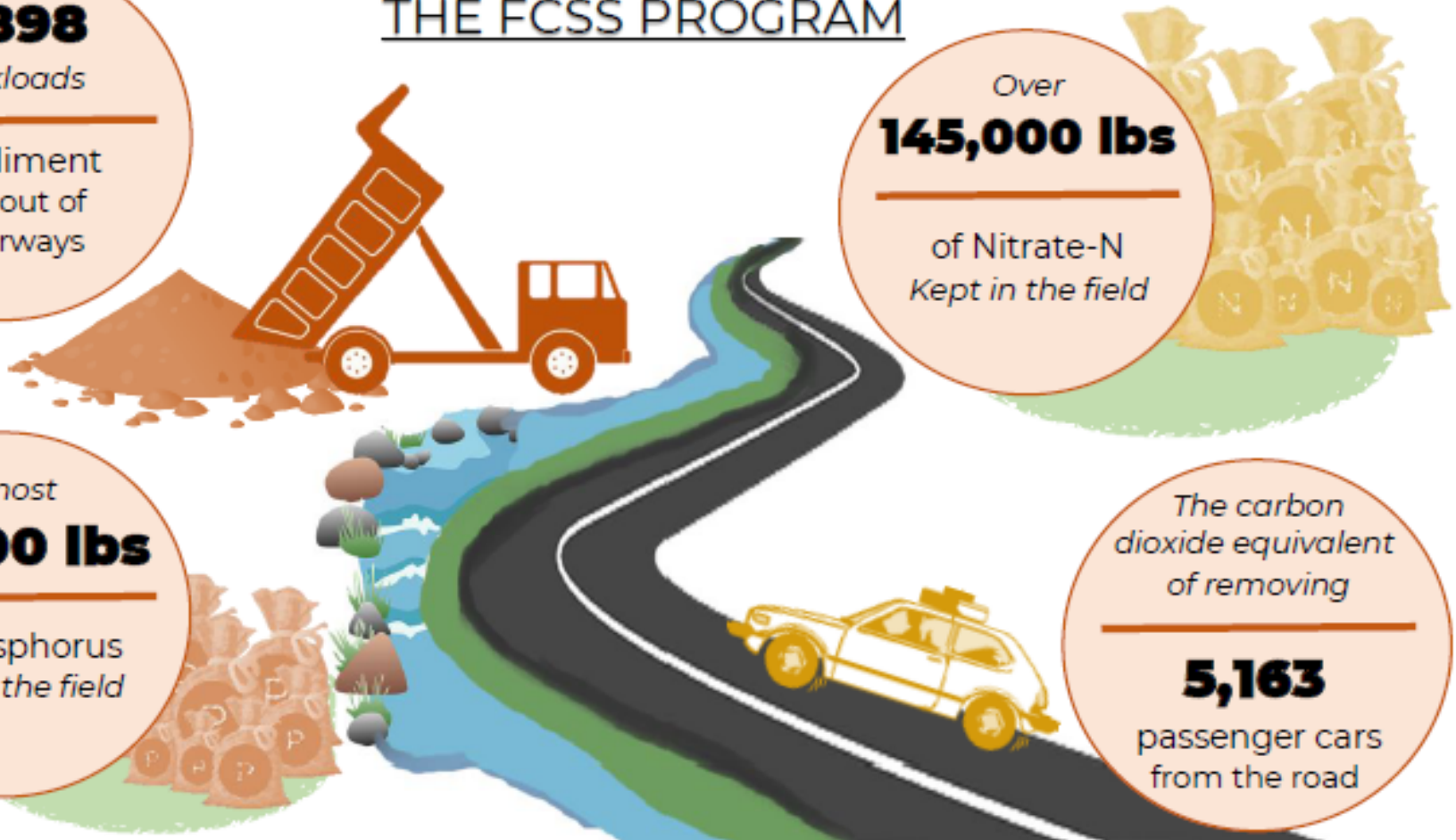
of Nitrate-N
Kept in the field

Almost
14,000 lbs

of Phosphorus
Kept in the field

The carbon
dioxide equivalent
of removing

5,163
passenger cars
from the road



What's next in Illinois

- Develop resources for education and promotion
- Training and education for SWCD, FSA and AIP
- Program evaluation and expansion
 - Leverage / identify additional resources
 - (funding, capacity, etc.)
 - Prioritization?
 - Increased funding
 - Participant surveys



What's next for the Midwest

- Support efforts in additional states
- Use U.S. Climate Alliance to promote program in participating states
- Inform/design pilot program for next Farm Bill discussion



AFT Presentations: July 29

WEDNESDAY

- 2:09 PM CDT: Michelle Perez on results from 2 year's of RCPP effort to reduce nutrient run-off
- 3:00 PM - 4:30 PM CDT: **SYMPOSIUM:** Emily Bruner on the S.T.A.R. Initiative's history, implementation, and future directions



Saving the Land and Water that Sustains Us



American Farmland Trust

www.farmland.org

kreynolds@farmland.org