

McHENRY-LAKE COUNTY SOIL & WATER CONSERVATION DISTRICT



1648 S. Eastwood Dr. Woodstock, Illinois 60098 (815) 338-0444 ext. 3 www.mchenryswcd.org

New “Pilot” Nutrient Trading Program



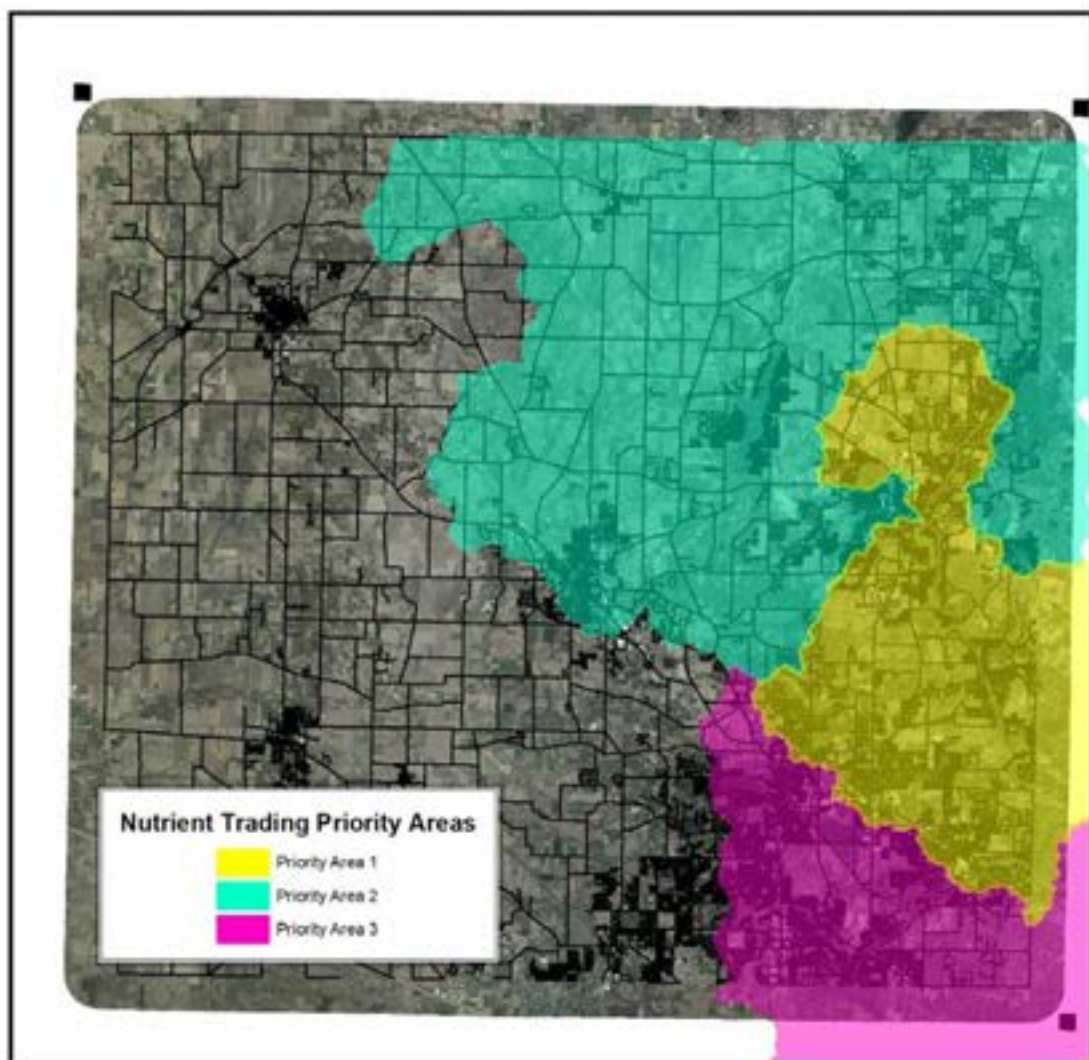
On January 15, 2025, area producers gathered at the McHenry County Farm Bureau to learn about a new program from speaker, Bartlett Durand, which partners agricultural producers and wastewater treatment plants to implement practices which reduce phosphorus on farm fields. The meeting was hosted by the Association of Illinois Soil & Water Conservation Districts in partnership with the McHenry-Lake County Soil & Water Conservation District, The Walton Family Foundation, McHenry

County Conservation District, and North Moraine Wastewater Reclamation District.

The North Moraine Wastewater Reclamation District (NMWRD) has entered into an agreement with the Illinois Environmental Protection Agency (IEPA) to provide funding to area producers in lieu of additional plant upgrades to remove phosphorus, thus reducing the amount of phosphorus coming into their treatment plant and is considered the “trade.” Three priority areas have been identified with Priority Area 1 providing the greatest benefit or “trade” to NMWRD (see maps within this document or in person at the McHenry-Lake County Soil & Water Conservation District office).

Mr. Durand indicated that the goal of the pilot program is to create a “Farmer Led” watershed group that works together to determine which projects are implemented. Example practices include but are not limited to: Nutrient Management Planning, Cover Crops, Conservation Tillage (No-till/Strip-till), constructed wetlands, buffers, filter strips, constructed wetlands, bioreactors, and prairie plantings.

If you are interested in participating in this Farmer Led group or would like more information, please contact Spring Duffey, McHenry-Lake County Soil & Water Conservation District at (phone) 815-338-0444 ext. 3 or (email) spring.duffey@il.nacdnet.net.



Nutrient Trading Area Map for McHenry County

0 7,500 15,000 30,000 45,000 60,000 Feet

Produced By: McHenry-Lake County Soil & Water Conservation District
2022 Aerial



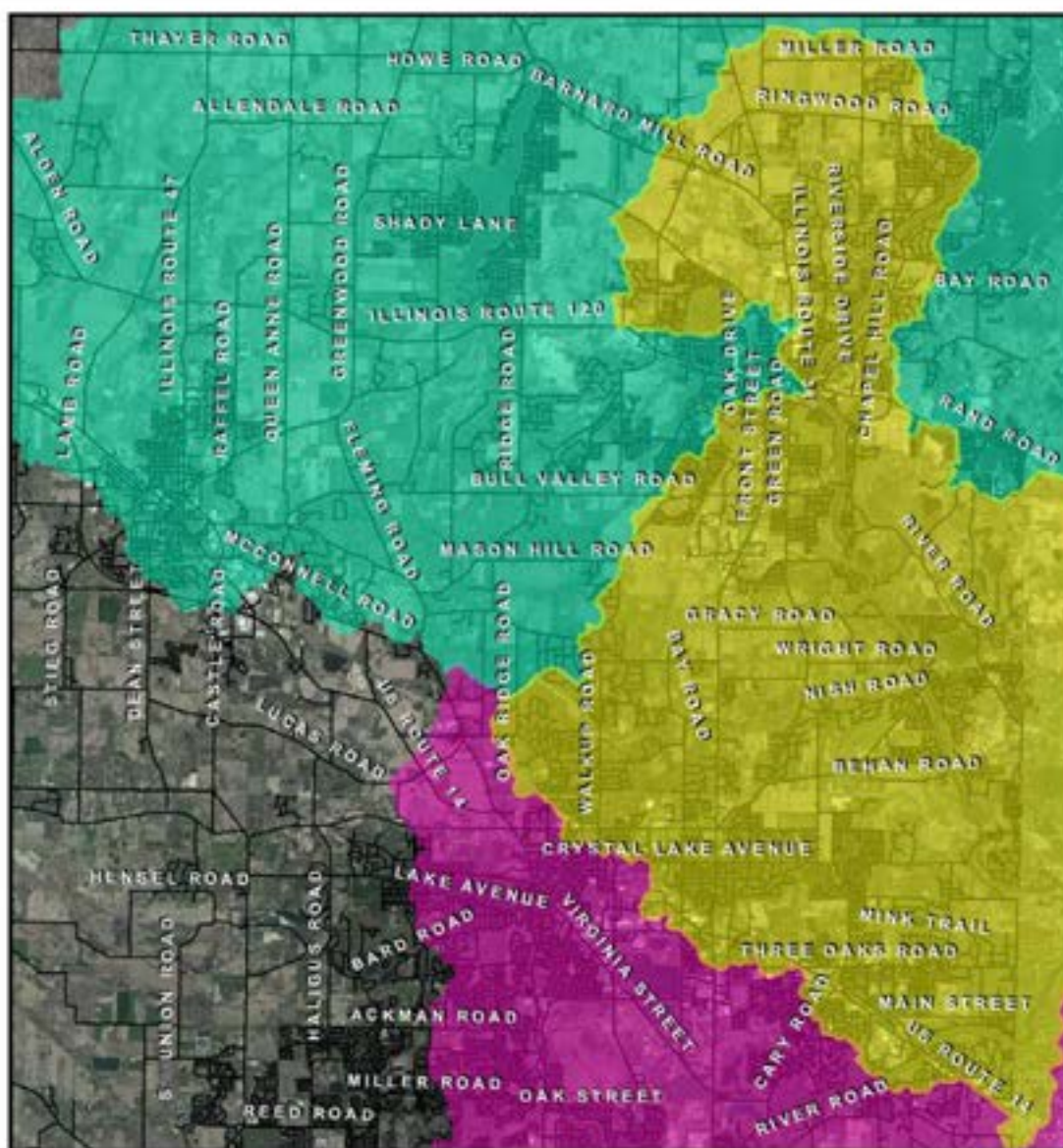
Nutrient Trading Area Map for Lake County



0 6,000 12,000 24,000 36,000 48,000 Feet

Produced By: McHenry-Lake County
Soil & Water Conservation District
2022 Aerial





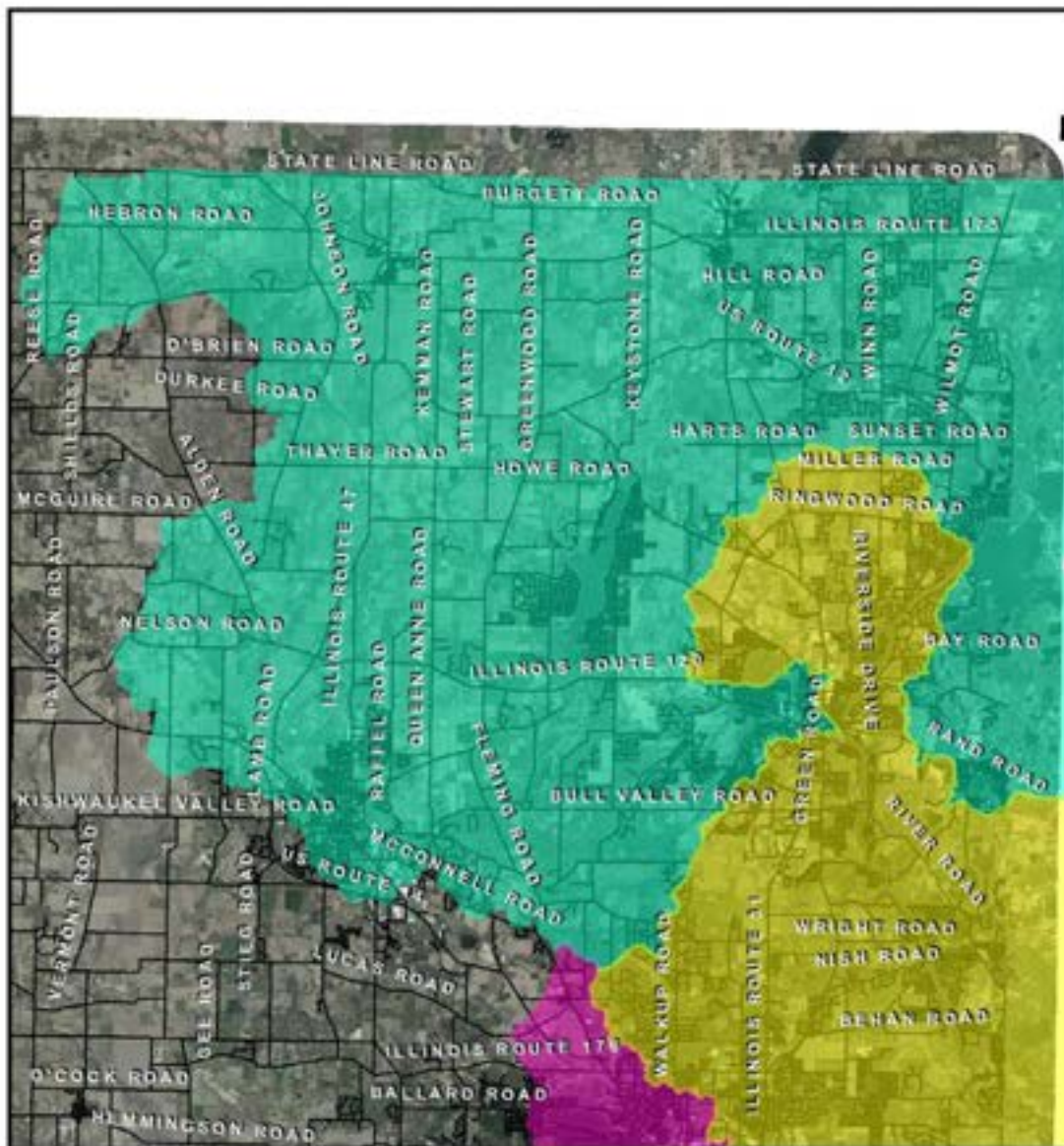
Nutrient Trading Area Map for McHenry County
Priority Area 1



0 4,000 8,000 16,000 24,000 32,000 Feet

Produced By: McHenry-Lake County
Soil & Water Conservation District
2022 Aerial





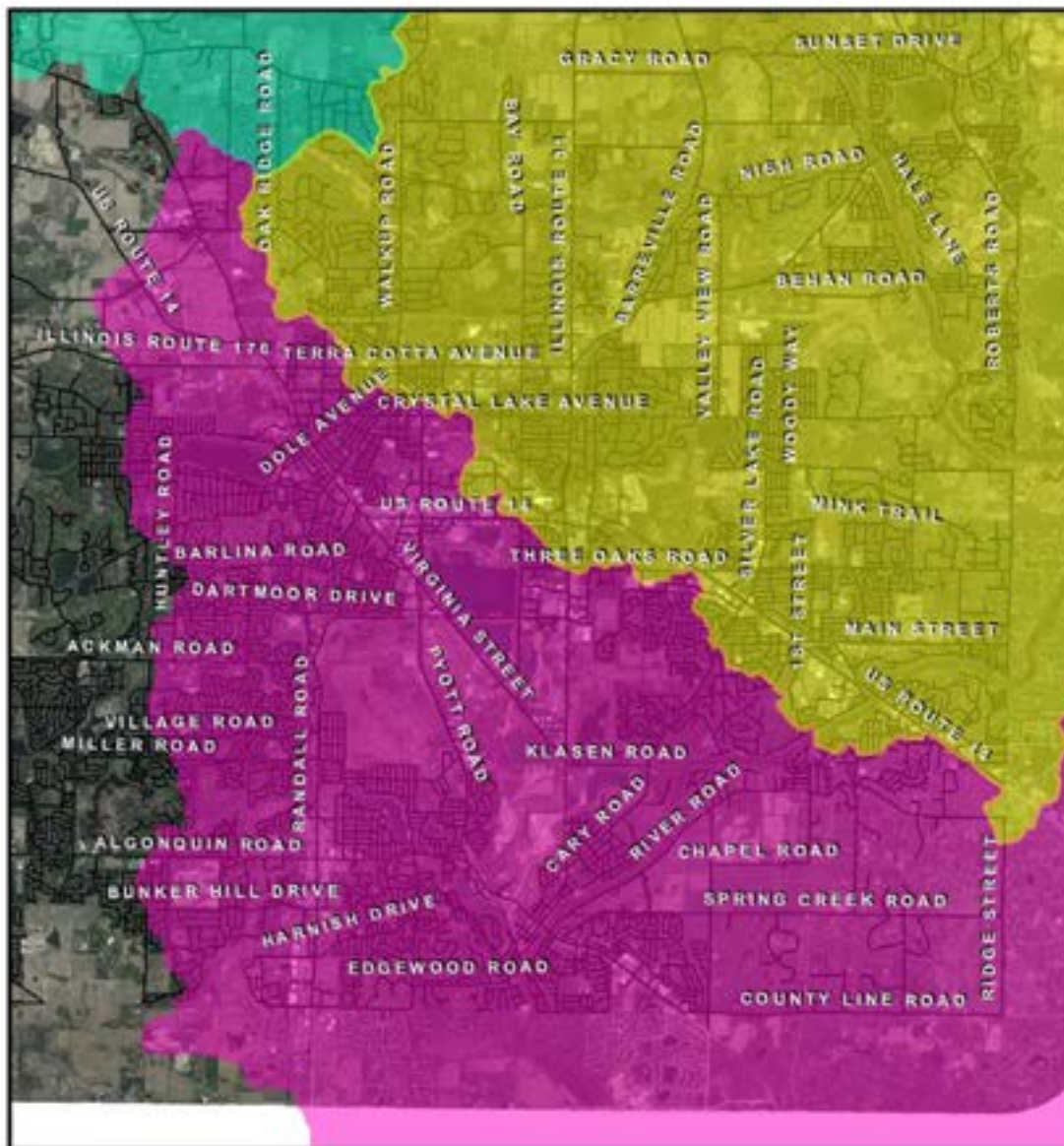
Nutrient Trading Area Map for McHenry County
Priority Area 2



0 5,000 10,000 20,000 30,000 40,000 Feet

Produced By: McHenry-Lake County
Soil & Water Conservation District
2022 Aerial



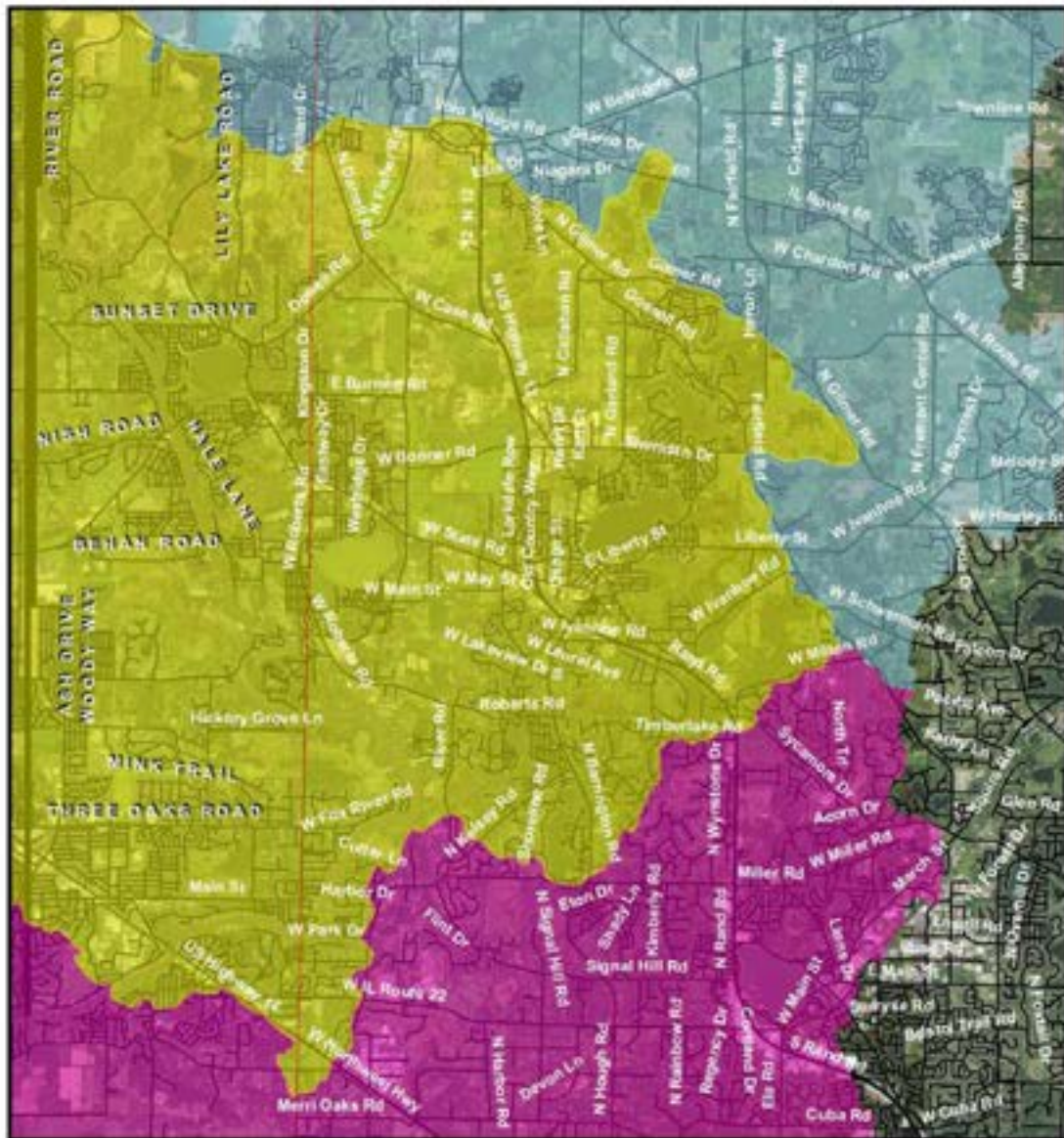


Nutrient Trading Area Map for McHenry County
Priority Area 3



Produced By: McHenry-Lake County
Soil & Water Conservation District
2022 Aerial





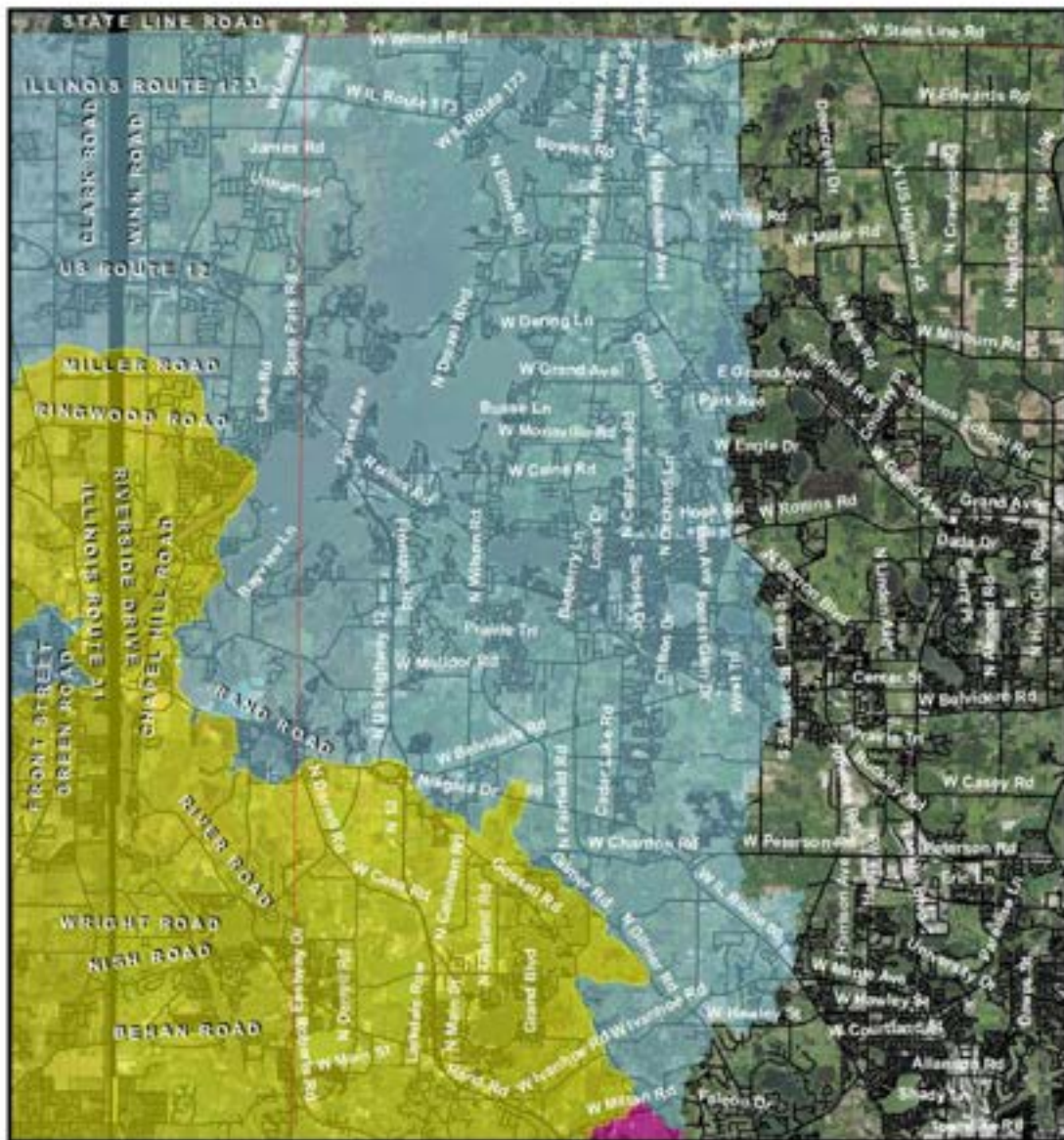
Nutrient Trading Area Map for Lake County
Priority Area 1



0 2,750 5,500 11,000 16,500 22,000 Feet

Produced By: McHenry-Lake County
Soil & Water Conservation District
2022 Aerial





Nutrient Trading Area Map for Lake County
Priority Area 2



0 4,250 8,500 17,000 25,500 34,000 Feet

Produced By: McHenry-Lake County
Soil & Water Conservation District
2022 Aerial



